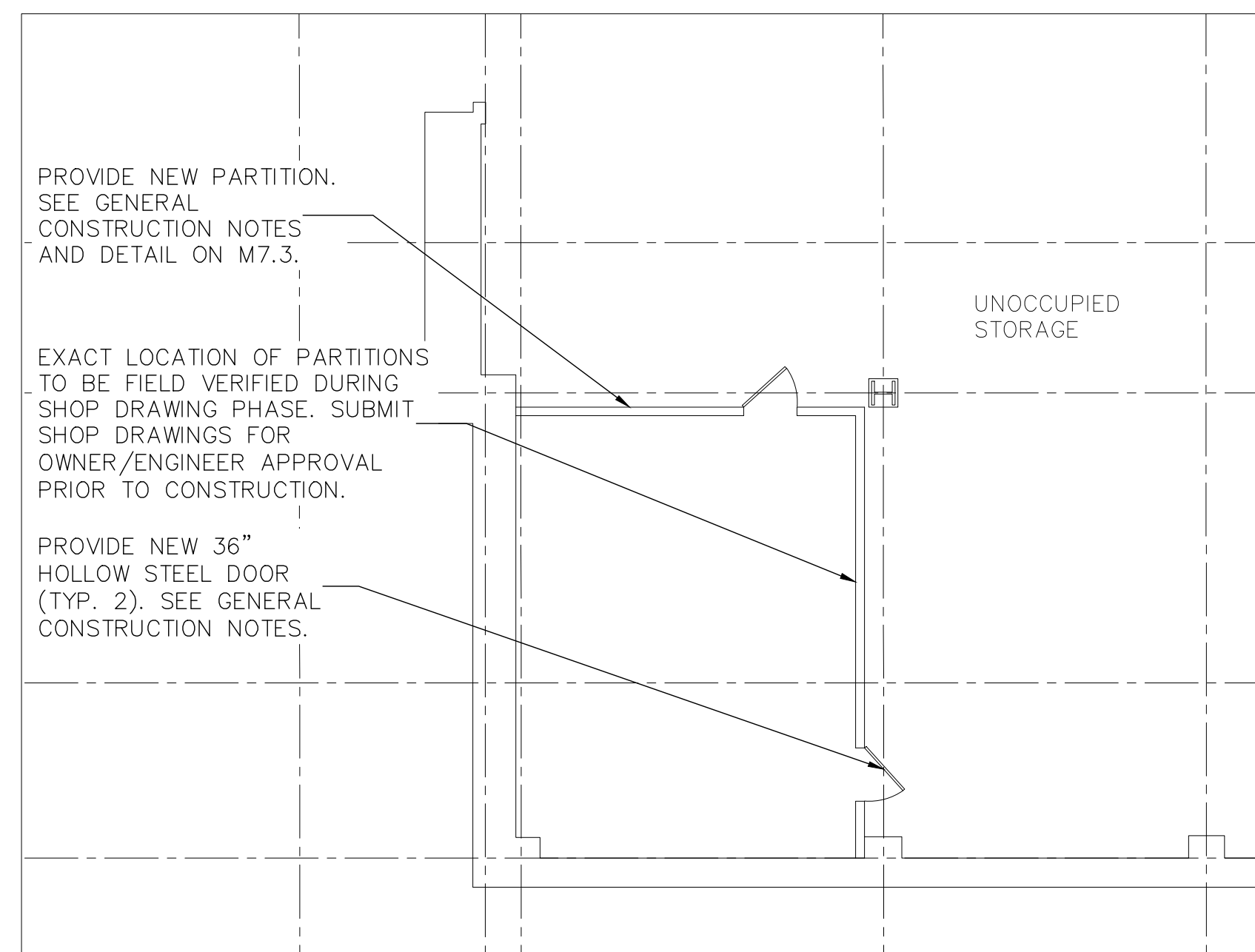
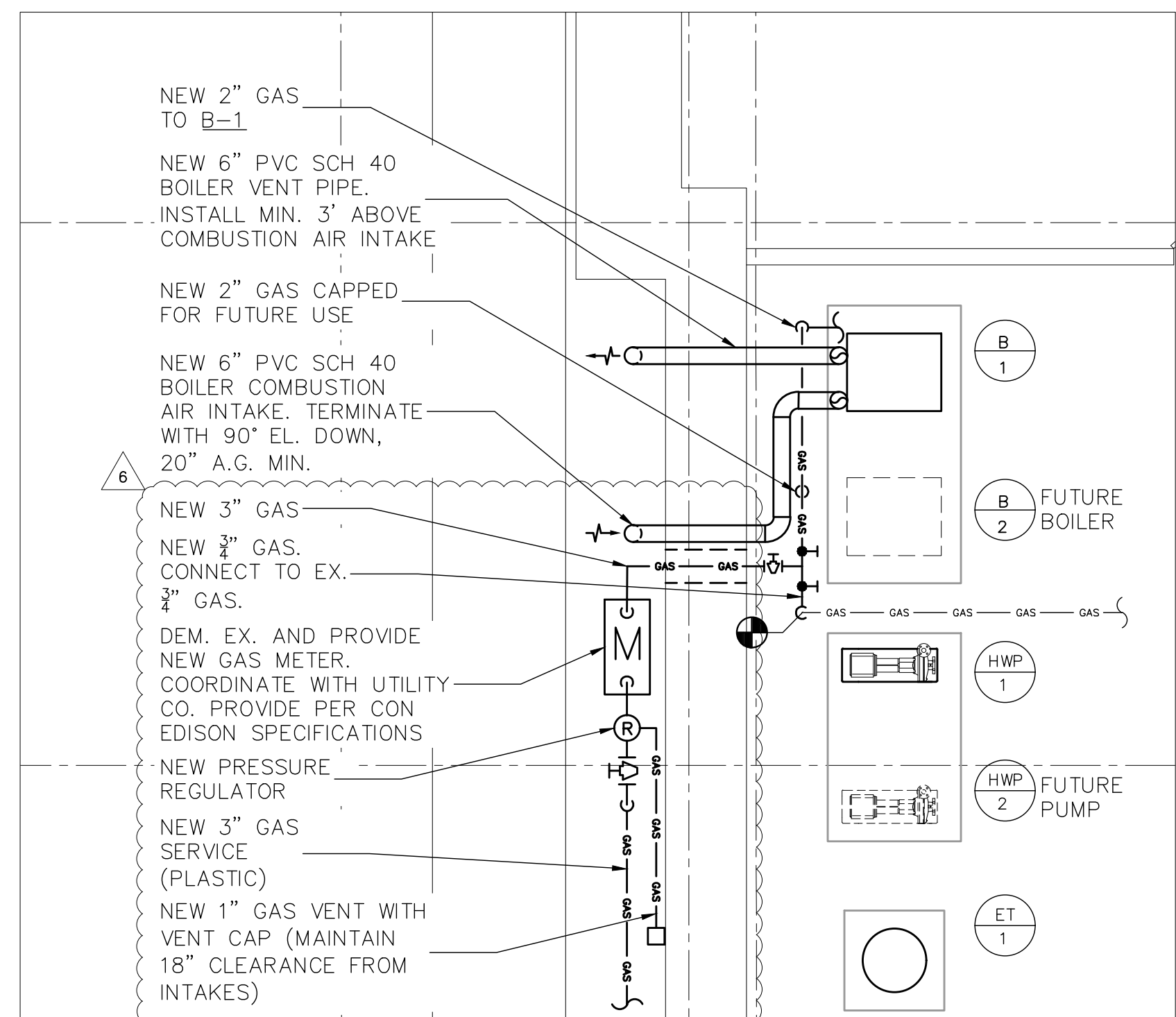


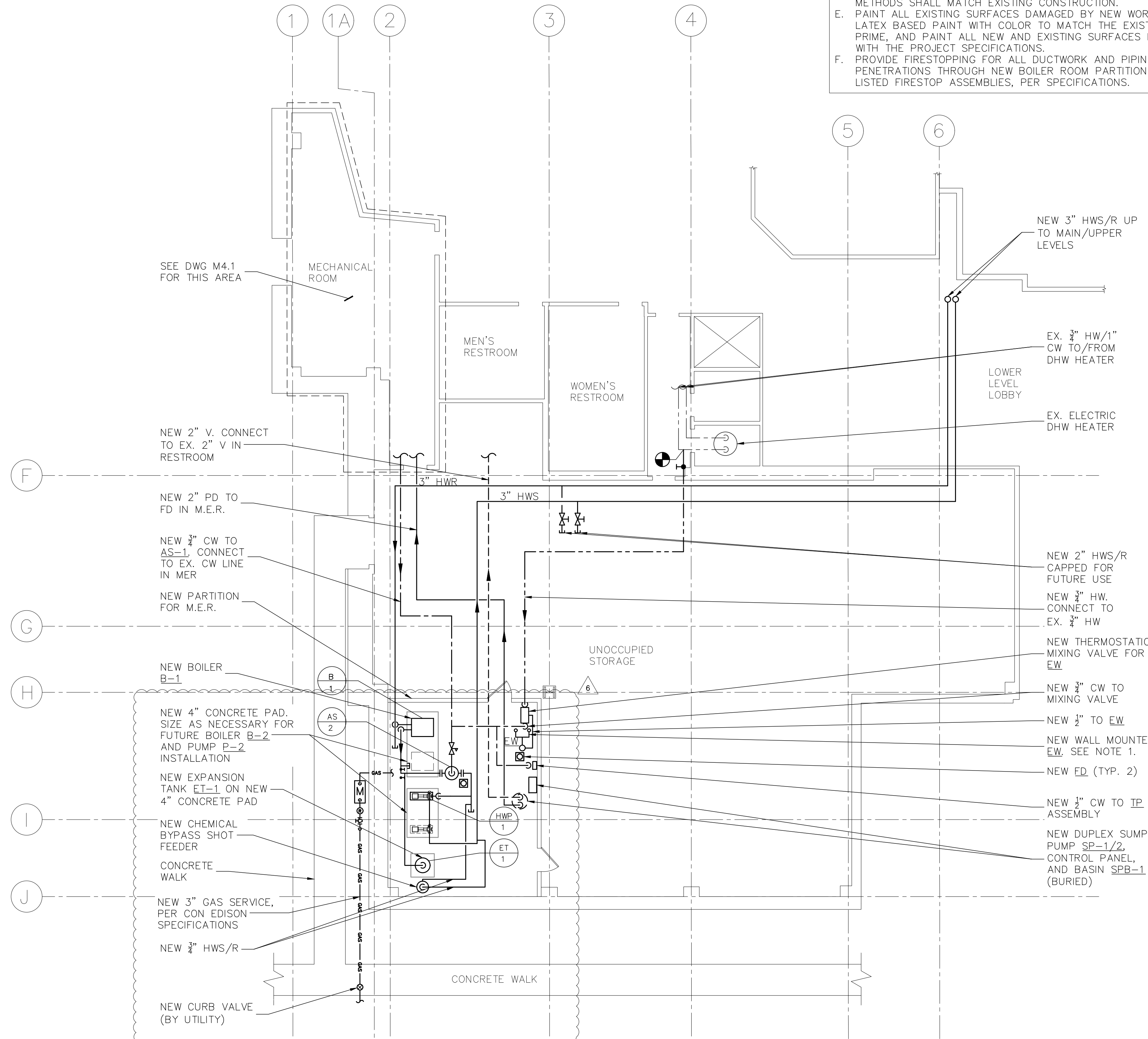
**4 PLUMBING SUB-SLAB PARTIAL NEW WORK PLAN**  
SCALE: 1/8" = 1'-0"  
NORTH



**3 PARTITION NEW WORK PLAN**  
SCALE: 1/8" = 1'-0"  
NORTH



**2 MECHANICAL BOILER VENTING AND GAS PIPING PLAN**  
SCALE: 1/4" = 1'-0"  
NORTH



**1 MECHANICAL/PLUMBING LOWER LEVEL PARTIAL NEW WORK PLAN**  
SCALE: 1/8" = 1'-0"  
NORTH

**GENERAL CONSTRUCTION NOTES:**

- PROVIDE NEW SHEETROCK PARTITIONS AS SHOWN. CONSTRUCTION SHALL BE PER UL DESIGN 419:
  - 3-1/2" 25 GAUGE STEEL STUD; 24" O.C.
  - (1) LAYER 5/8" SHEETROCK PANELS ON EACH SIDE (4-3/4" ASSEMBLY). FIRECODE C CORE GYPSUM PANELS OR EQUAL
  - 1-HOUR FIRE RATED
  - FACE LAYER JOINTS FINISHED
  - FLOOR AND CEILING RUNNERS; CHANNEL SHAPED, FABRICATED FROM MIN. 25 MSG CORROSION-PROTECTED STEEL, MIN. DEPTH TO ACCOMMODATE STUD SIZE, WITH MIN. 1-1/4" LONG LEGS, ATTACHED TO FLOOR AND CEILING WITH FASTENERS 24" OC MAX.
  - FASTENERS; TYPE S OR S-12 STEEL SCREWS USED TO ATTACH PANELS TO STUDS, 1" LONG FOR 5/8" THICK PANELS, SPACED 8" OC WHEN PANELS ARE APPLIED HORIZONTALLY, OR 8" OC ALONG VERTICAL AND BOTTOM EDGES AND 12" OC IN THE FIELD WHEN PANELS ARE APPLIED VERTICALLY.
- PROVIDE NEW 90 MINUTE FIRE-RATED STEEL DOOR (36"x80") WITH STEEL LINTEL. SEE DETAIL ON M7.3.
- PRIME AND PAINT ALL NEW SURFACES.
- PROVIDE ALL CUTTING AND PATCHING OF MASONRY WALLS, PARTITIONS, CEILINGS, ETC. AS REQUIRED TO FACILITATE THE MECHANICAL AND ELECTRICAL WORK. PATCHING MATERIALS AND METHODS SHALL MATCH EXISTING CONSTRUCTION.
- PAINT ALL EXISTING SURFACES DAMAGED BY NEW WORK WITH NEW LATEX BASED PAINT WITH COLOR TO MATCH THE EXISTING. PREPARE, PRIME, AND PAINT ALL NEW AND EXISTING SURFACES IN ACCORDANCE WITH THE PROJECT SPECIFICATIONS.
- PROVIDE FIRESTOPPING FOR ALL DUCTWORK AND PIPING PENETRATIONS THROUGH NEW BOILER ROOM PARTITIONS PER UL LISTED FIRESTOP ASSEMBLIES, PER SPECIFICATIONS.

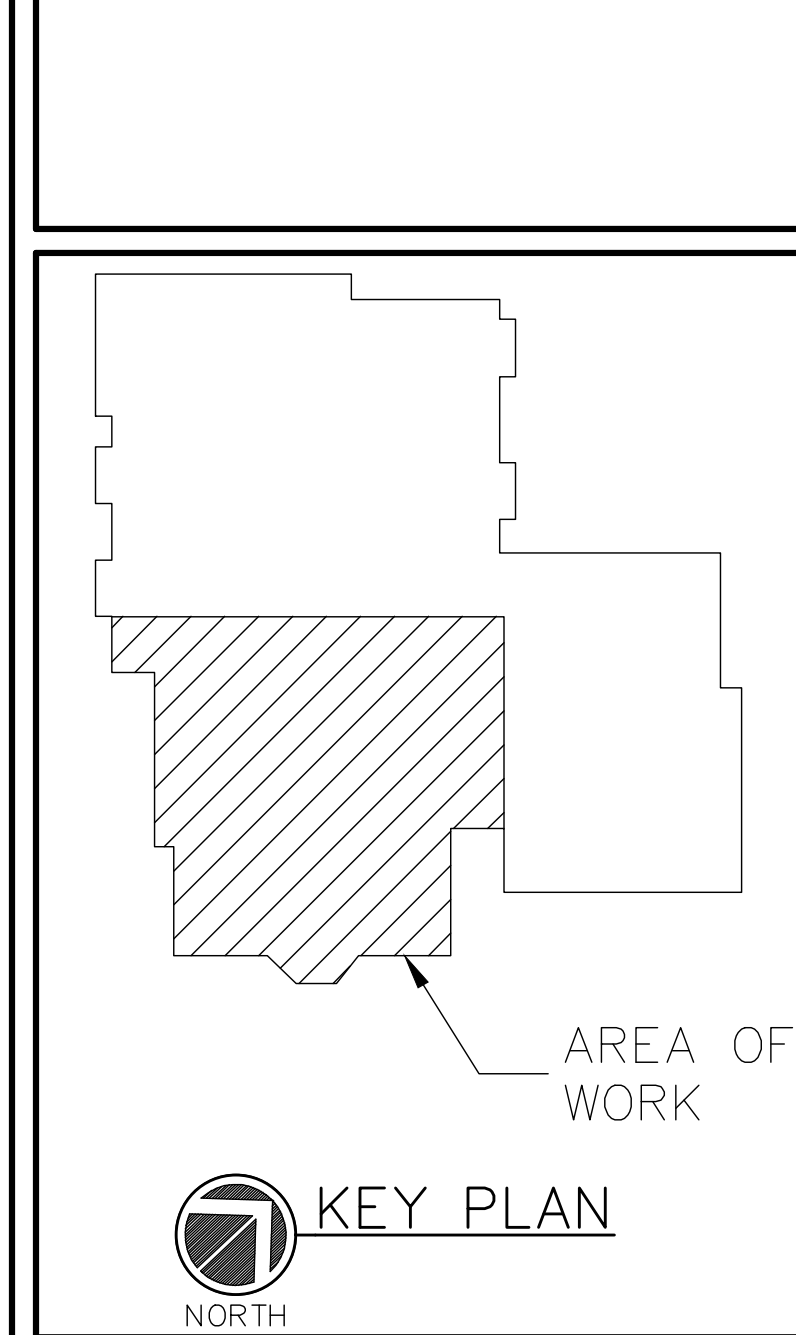
**OLA Consulting Engineers**  
50 Broadway, Hawthorne,  
New York 10532  
914.747.2800

12 East 49th Street, 11th Flr.  
New York, NY 10017  
646.849.4110

olace.com

CLIENT

**OSSINING PUBLIC LIBRARY**  
53 CROTON AVE  
OSSINING, NY 10562



No.	ISSUE OR REVISION	DATE
6	BID ADDENDUM #1	3/4/19
5	ISSUED FOR BID	2/11/19
4	SED ADDENDUM #1	8/21/18
3	ISSUED FOR BID	2/16/18
2	ISSUED FOR BID	12/20/17
1	ISSUED FOR REVIEW	11/21/17

No use, reproduction or dissemination may be made of this drawing and the concepts set forth without the prior written consent of OLA Consulting Engineers, PC. Copyright ©

PROJECT TITLE

**OSSINING PUBLIC LIBRARY  
HVAC UPGRADES**  
53 CROTON AVE  
OSSINING, NY 10562

DRAWING TITLE

**MECHANICAL/PLUMBING  
LOWER LEVEL PARTIAL  
NEW WORK PLAN**

SCALE	PROJECT NO.
AS NOTED	
DRAWN BY AC	DRAWING NO.
CHECKED BY JK	<b>MP21</b>
DATE 10/17/17	